

WALL & PARTITION SCHEDULE

2x4 STUD WALL, 1'-4" ONCENTERS, TYPICAL, 1/2 GYPSUM
EACH FACE, TYPICAL EXPANDING FOAM INSULATION
AT EXTERIOR and SOUND BATT INSULATION AT ALL
BATH AND LAUNDRY WALLS

2x6 STUD WALL, 1'-4" ONCENTERS, TYPICAL, 1/2 GYPSUM,
EACH FACE, TYPICAL EXPANDING FOAM INSULATION
AT EXTERIOR

DOUBLE 2x6 STUD WALL, 1'-4" ONCENTERS, TYPICAL, 1/2
GYPSUM, EACH FACE, TYPICAL EXPANDING FOAM INSULATION
AT EXTERIOR

12" POURED CONCRETE WALL, to be designed by concrete contractor to meet or exceed building code

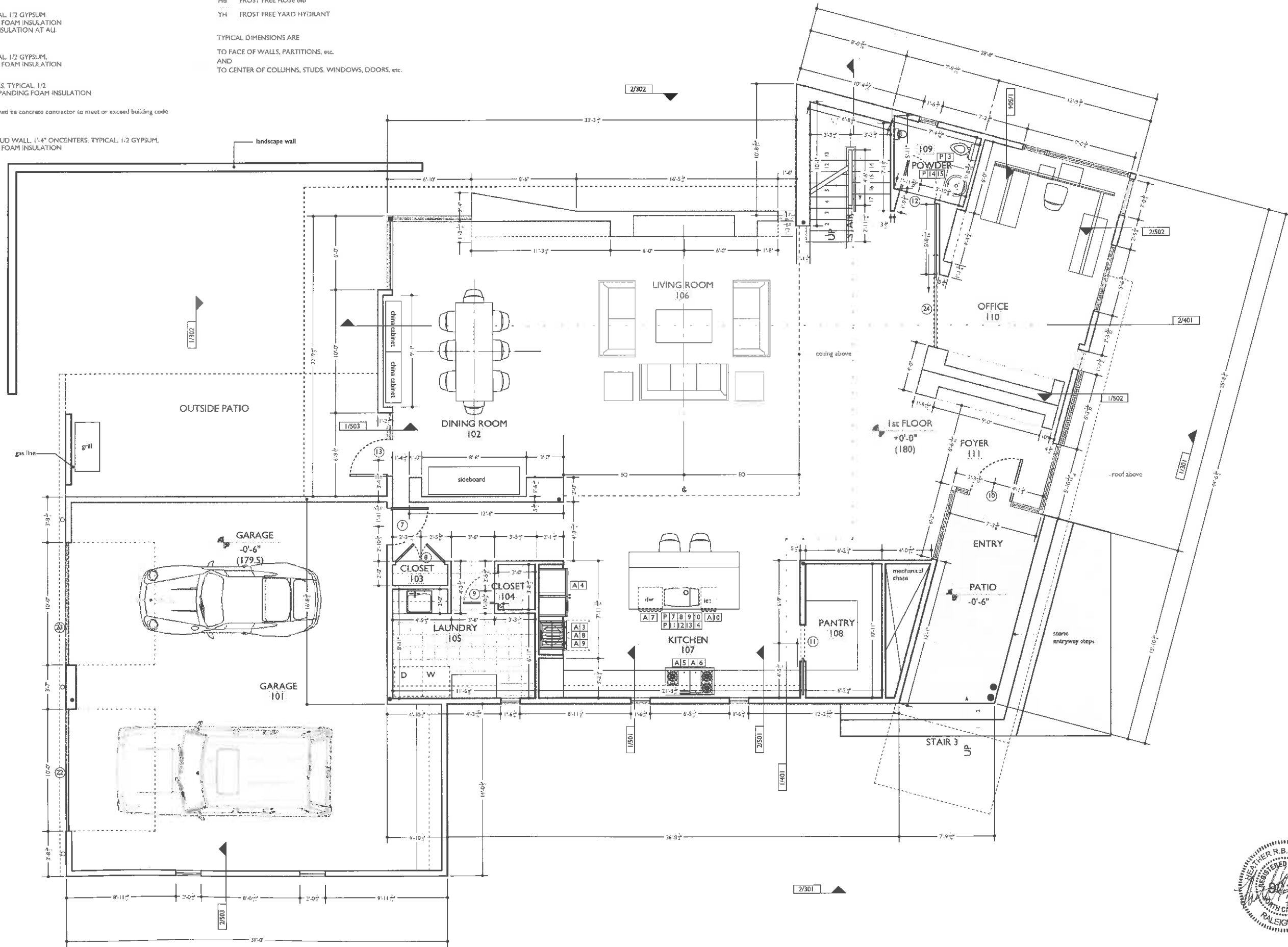
12" POURED CONCRETE WALL with 2x4 STUD WALL, 1'-4" ONCENTERS, TYPICAL, 1/2 GYPSUM,
EACH FACE, TYPICAL EXPANDING FOAM INSULATION
AT EXTERIOR

HB FROST FREE HOSE BIB
YH FROST FREE YARD HYDRANT

TYPICAL DIMENSIONS ARE

TO FACE OF WALLS, PARTITIONS, etc.
AND
TO CENTER OF COLUMNS, STUDS, WINDOWS, DOORS, etc.

Main Floor Plan |
1/4"=1'-0" 202



CEDENO RICHMOND · VIRGINIA	residence	0917 project	TONIC DESIGN ARCHITECTURE		1/4" = 1' scale	10.09.22 date	1lb drawn	PERMIT SET	
			209 BICKETT BLVD / RALEIGH, NORTH CAROLINA / 27608 / 919.803.4278 / 919.803.4279 (f)					Main Floor	202

L & PARTITION SCHEDULE

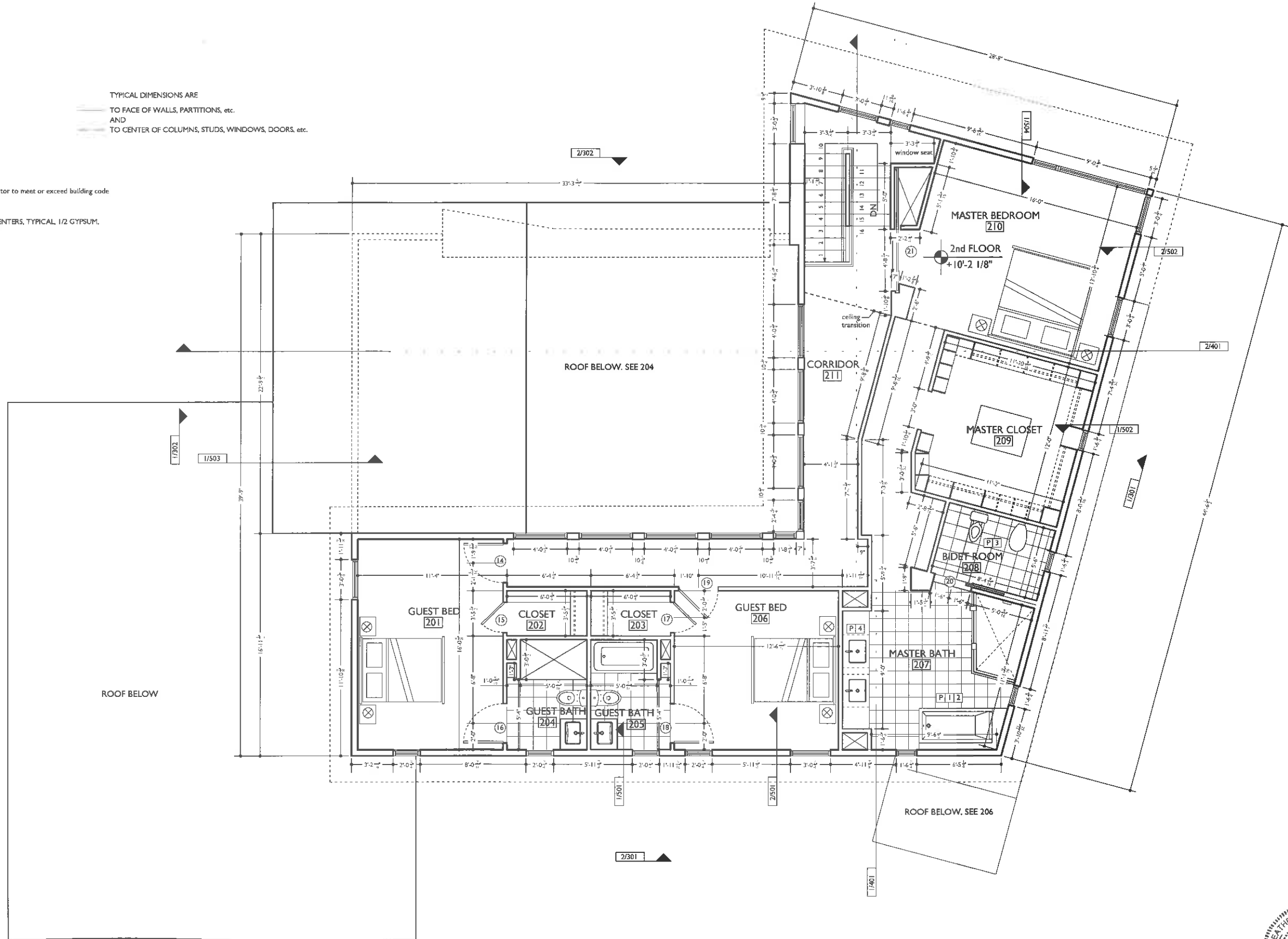
2x4 STUD WALL, 1'-4" ONCENTERS, TYPICAL, 1/2 GYPSUM,
EACH FACE, TYPICAL EXPANDING FOAM INSULATION
AT EXTERIOR and SOUND BATT INSULATION AT ALL
BATH AND LAUNDRY WALLS

2x6 STUD WALL, 1'-4" ONCENTERS, TYPICAL, 1/2 GYPSUM,
EACH FACE, TYPICAL EXPANDING FOAM INSULATION
AT EXTERIOR

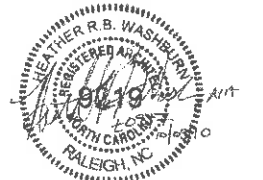
12" POURED CONCRETE WALL, to be designed by concrete contractor to meet or exceed building code

12" POURED CONCRETE WALL with 2x4 STUD WALL, 1'-4" ONCENTERS, TYPICAL, 1/2 GYPSUM,
EACH FACE, TYPICAL EXPANDING FOAM INSULATION
AT EXTERIOR

TYPICAL DIMENSIONS ARE
TO FACE OF WALLS, PARTITIONS, etc.
AND
TO CENTER OF COLUMNS, STUDS, WINDOWS, DOORS, etc.



upper floor plan	1
1/4" = 1'-0"	203

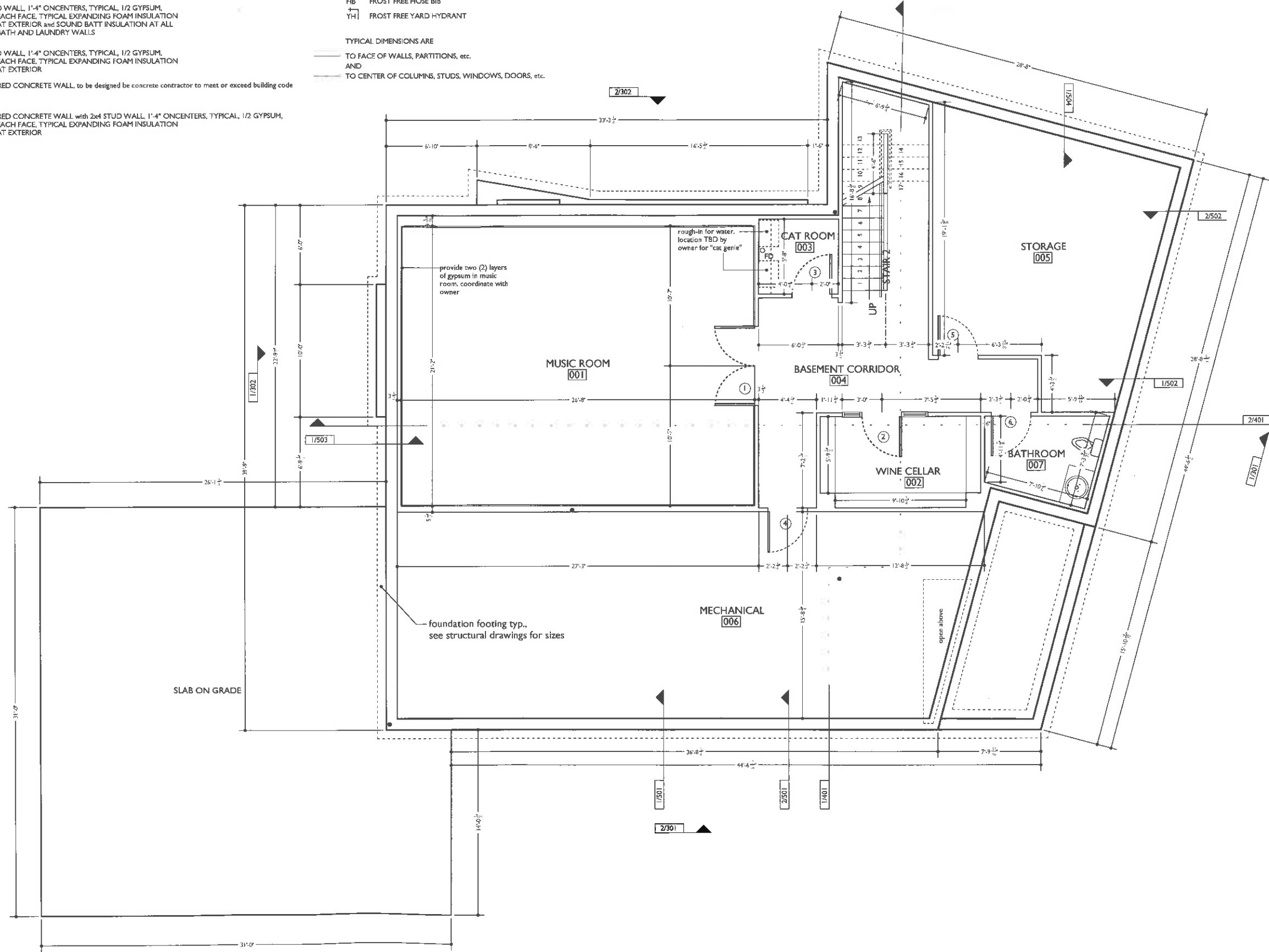


WALL & PARTITION SCHEDULE

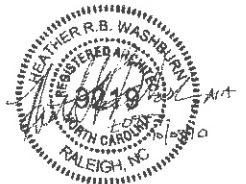
- 2x4 STUD WALL, 1'-4" ONCENTERS, TYPICAL, 1/2 GYPSUM, EACH FACE, TYPICAL EXPANDING FOAM INSULATION AT EXTERIOR and SOUND BATT INSULATION AT ALL BATH AND LAUNDRY WALLS
- 2x6 STUD WALL, 1'-4" ONCENTERS, TYPICAL, 1/2 GYPSUM, EACH FACE, TYPICAL EXPANDING FOAM INSULATION AT EXTERIOR
- 12" POURED CONCRETE WALL, to be designed by concrete contractor to meet or exceed building code
- 12" POURED CONCRETE WALL with 2x4 STUD WALL, 1'-4" ONCENTERS, TYPICAL, 1/2 GYPSUM, EACH FACE, TYPICAL EXPANDING FOAM INSULATION AT EXTERIOR

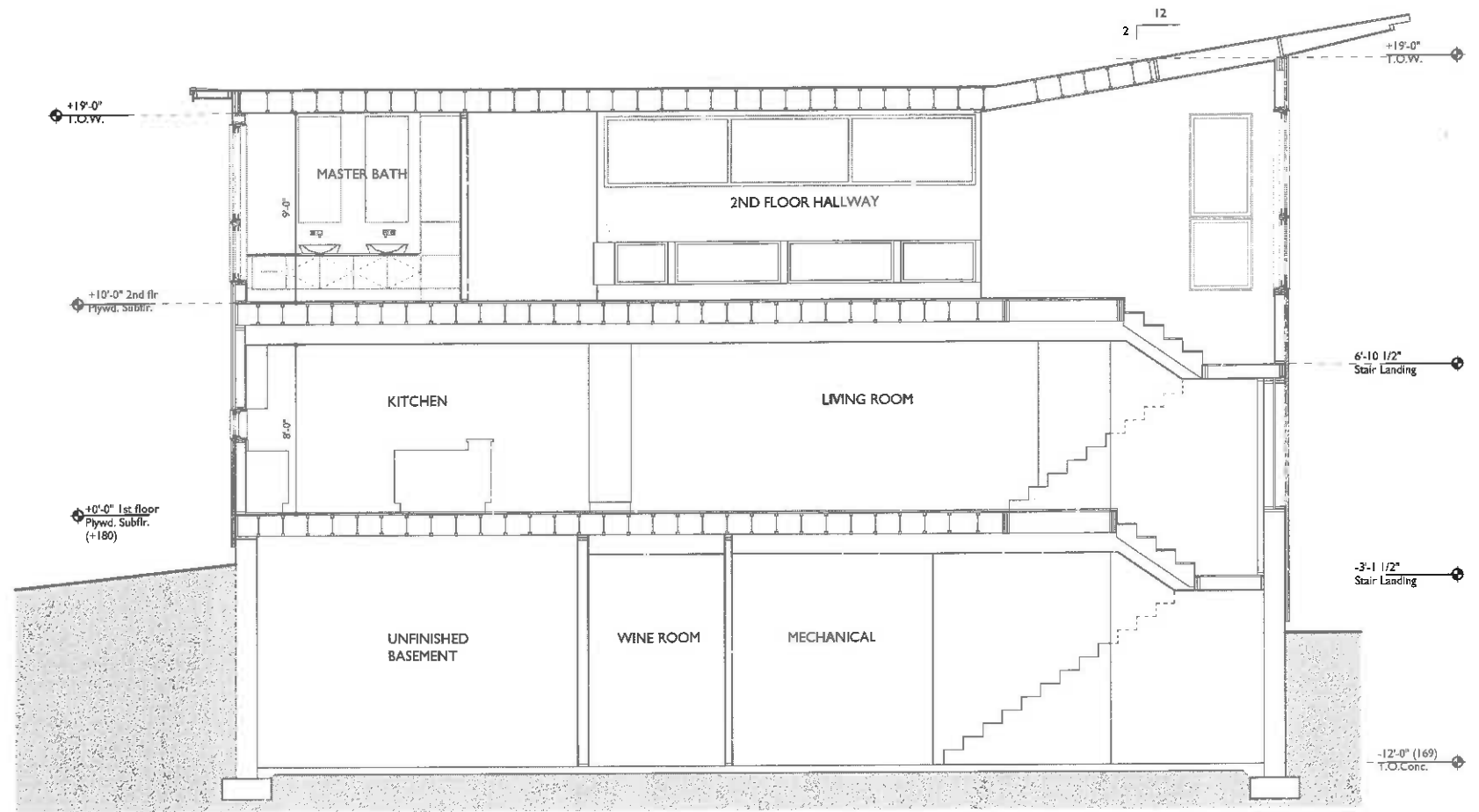
- HB FROST FREE HOSE BIB
- YH FROST FREE YARD HYDRANT

TYPICAL DIMENSIONS ARE
 TO FACE OF WALLS, PARTITIONS, etc.
 AND
 TO CENTER OF COLUMNS, STUDS, WINDOWS, DOORS, etc.

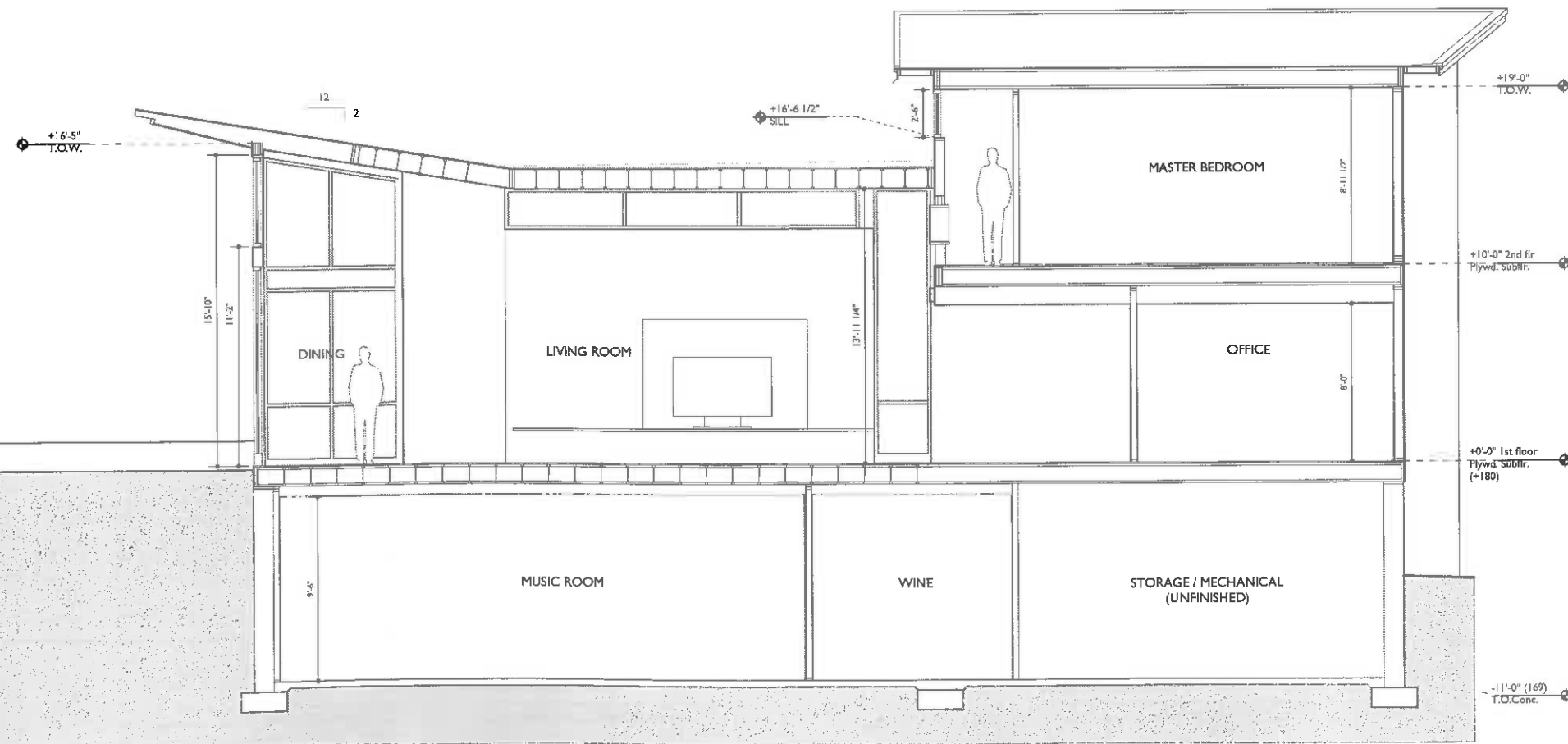


lower level plan	1
1/4"=1'-0"	201





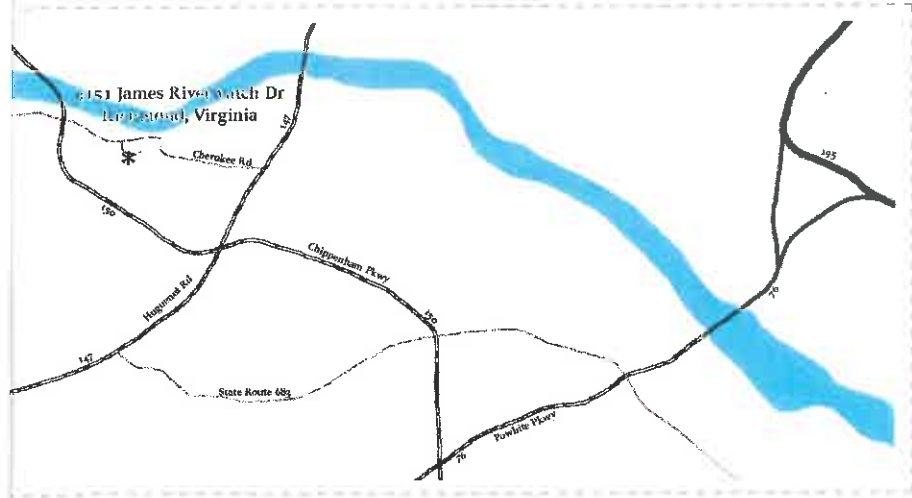
building section 1
1/4"=1'-0" 401



building section 2
1/4"=1'-0" 401

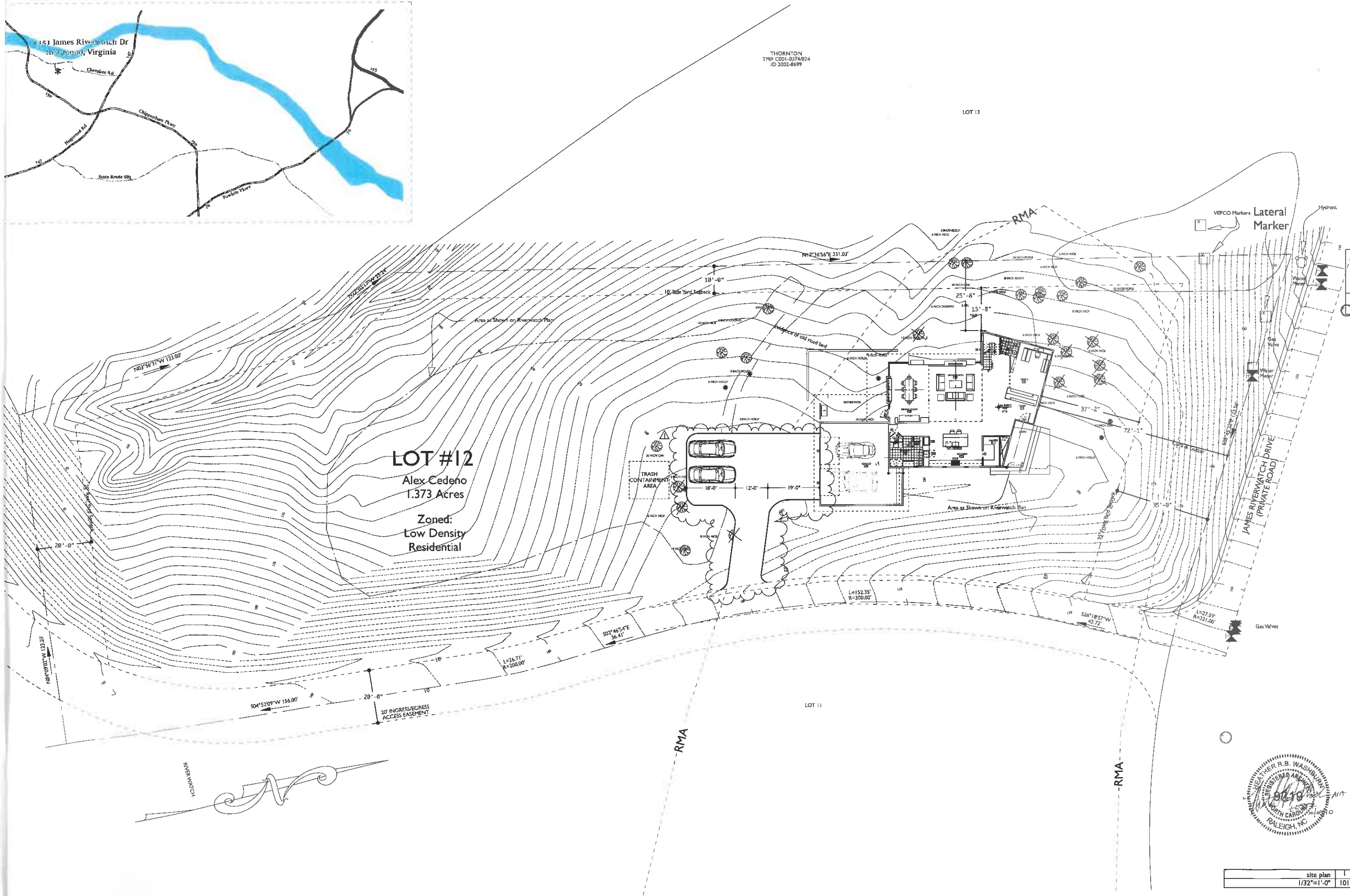


CEDENO RICHMOND - VIRGINIA	residence	r0917	TONIC DESIGN	ARCHITECTURE	PERMIT SET
	project	209 RICKETT BLVD / RALEIGH, NORTH CAROLINA / 27608 / 919.803.4278 / 919.803.4279 (f)	1/4" = 1'	10.09.22	Sections 401
			scale	date	drawn
				1lb	



THORNTON
TM# C001-0374/024
ID 2002-8699

LOT 13



LOT #12
Alex Cedeno
1.373 Acres
Zoned:
Low Density
Residential



site plan
1/32"=1'-0"
101

PERMIT SET

revision	date
01.11.11	10.09.22

scale

1/32" = 1'-0"

drawn

kw

site plan

101

CEDENO RICHMOND - VIRGINIA	residence	11917	TONIC DESIGN	ARCHITECTURE	10.09.22	kw	drawn
	project	209 BICKETT BLVD / RALEIGH NORTH CAROLINA / 27608 / 919-803-4278 / 919-803-4279 (f)	209 BICKETT BLVD / RALEIGH NORTH CAROLINA / 27608 / 919-803-4278 / 919-803-4279 (f)	ARCHITECTURE	10.09.22	kw	drawn

